

Spring 2021 Enrollment Update

COVID-19 Impact Continues

- **D. Elizabeth Balint**
Director, Institutional Effectiveness
- **Board of Trustees Meeting**
- **May 11th, 2021**

Spring 2021

Campus Enrollment Data – Important Dates

- 4/05 (M): First Day
- 4/16 (F): Census
- 4/23 (F): Faculty Census Rosters due
- 4/26 (M): Census Date data revised after rosters received

Late start courses still have students enrolling.

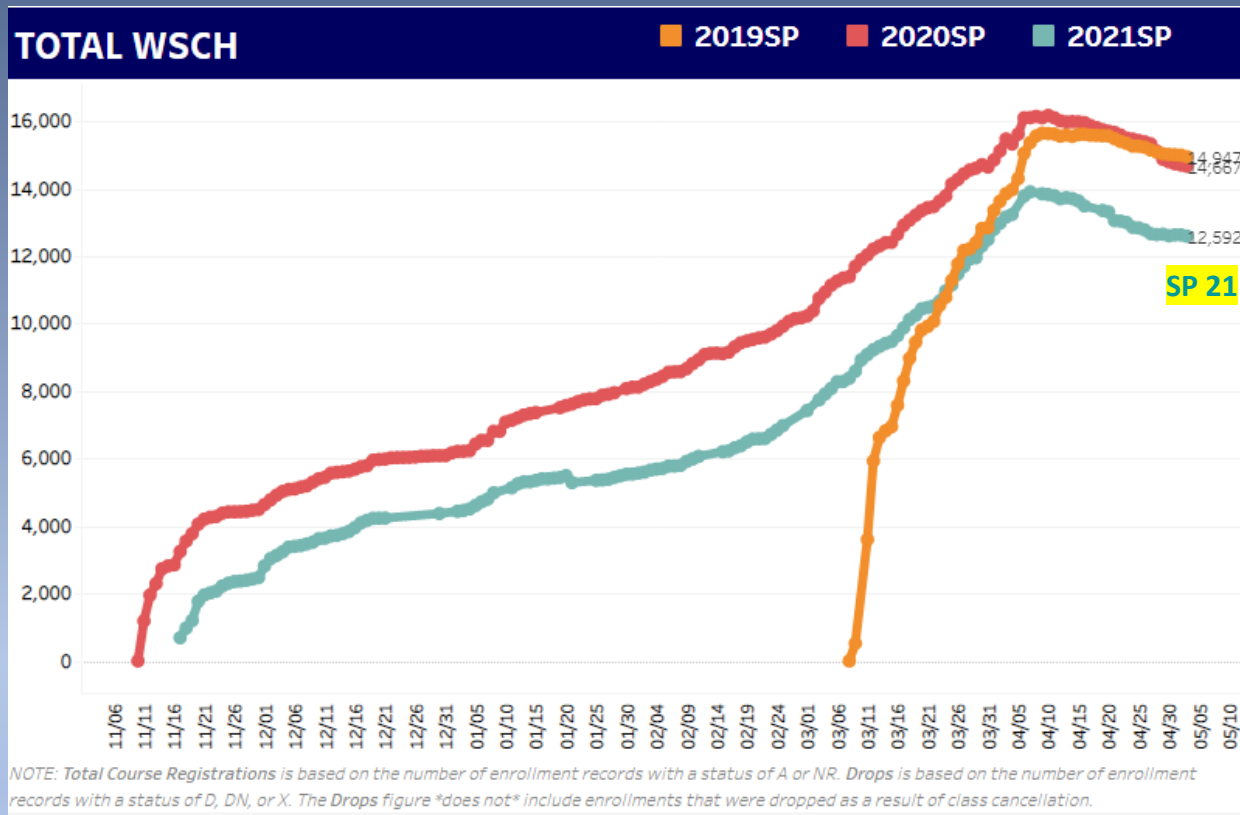
Dual Enrollment data not fully entered at this time.

(Want to provide the opportunity for every eligible student to receive college credit.)


JPA enrollment data not fully entered at this time. (Standard practice)

LTCC Campus (Credit) Enrollment Trend

Impact of COVID-19 continues



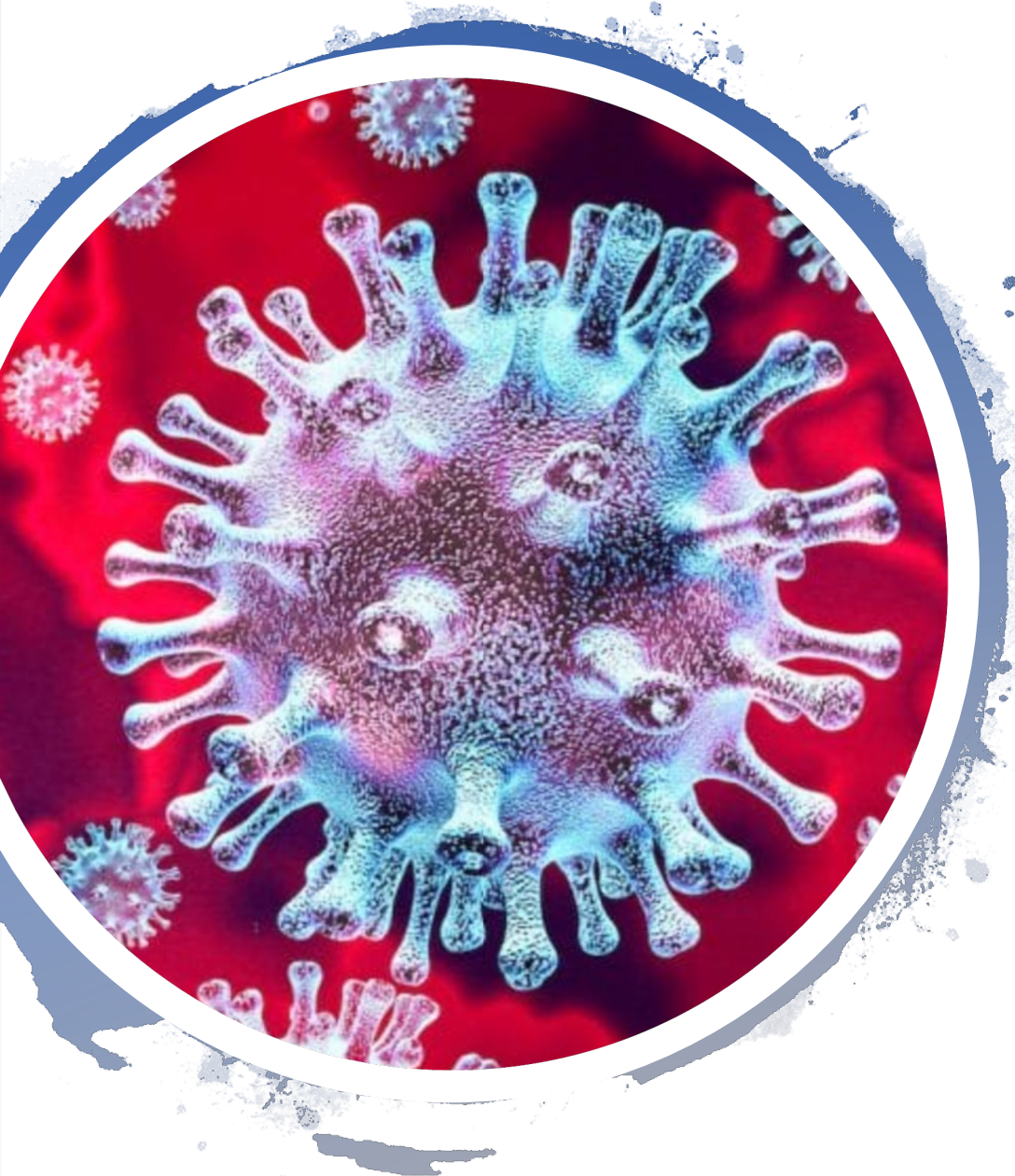
WSCH = Weekly Student Contact Hours (best indicator for FTES)



VIRTUAL CAMPUS

LTCC remains closed during the Coronavirus pandemic. Get the support you need on the Virtual Campus.

Metric	Spring Terms		
	2019	2020	2021
Course Enrollment	3,220	3,014	2,651
WSCH	14,947	14,667	12,592
2021 WSCH compared to 2020:			↓14%
2021 WSCH compared to 2019:			↓16%



Update on Campus Credit Programs Most Impacted by COVID-19 in Spring 2020

WSCH- Spring Term Comparisons:

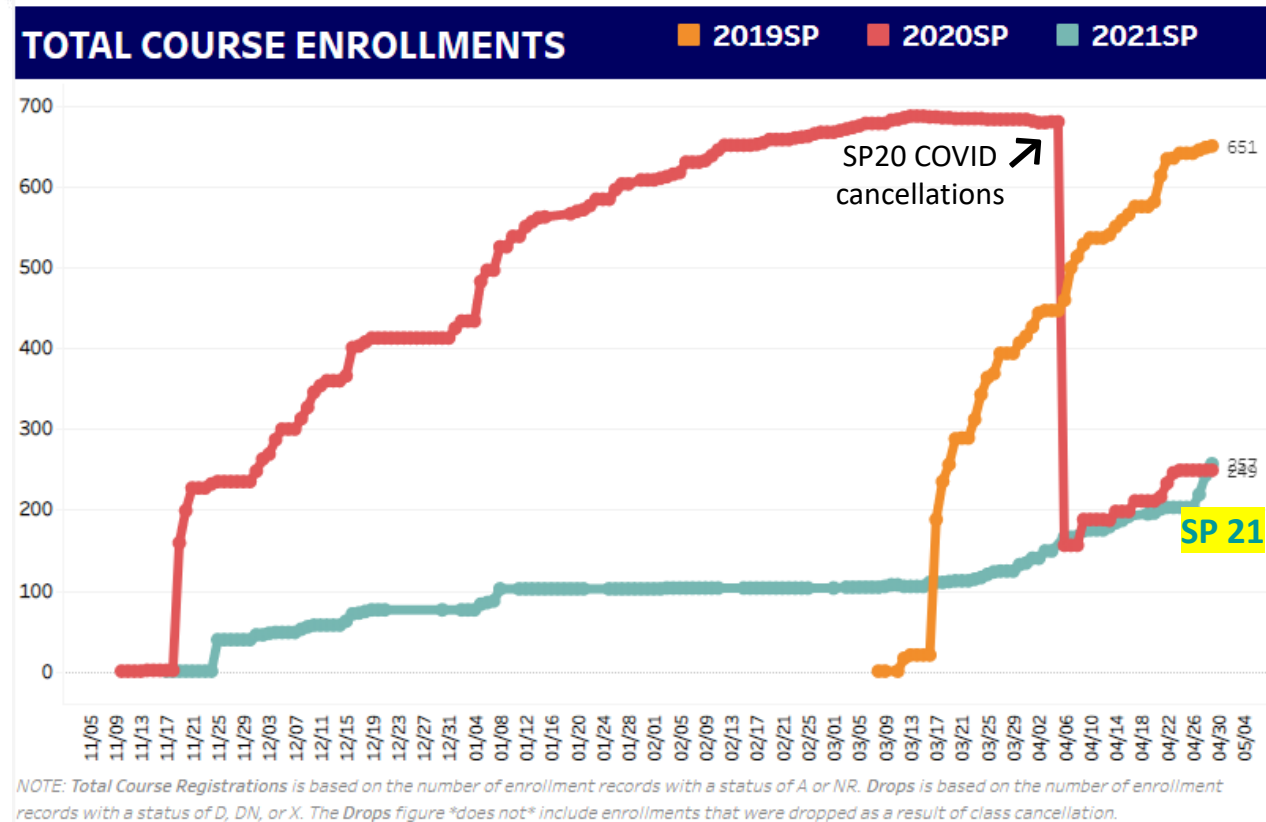
Subject	2019	2020	2021	2021 compared to 2020	2021 compared to 2019
Art	913	635	738	+16%	<i>-19%</i>
Culinary Arts	83	38	118	+211%	+42%
Physical Education	972	416	565	+36%	<i>-42%</i>
Wilderness Studies	548	207	514	+148%	<i>-06%</i>

LTCC Campus (Noncredit) Course Enrollment Trend – *Phys Ed continues to be impacted*

Greatest impact due to PEF-552,
Wellness/Health Older Adult course

PEF-552	Wellness/Health Older Adult			
	Enrollment			
Year	WI	SP	SU	FA
2019			293	443
2020	546			
2021		103		

Description: This course covers wellness and health for older adults. The course includes nutrition, stress management, disease prevention and management, and physical conditioning programs specifically designed for the older adult. Personalized wellness and health programs will be designed and implemented.



LTCC Promise Program Update

29 Promise Students have withdrawn from the Program citing COVID-19 related reasons.

(24 not enrolled in Spring 2021)

-> 19-20 cohort: 25 (~41%)

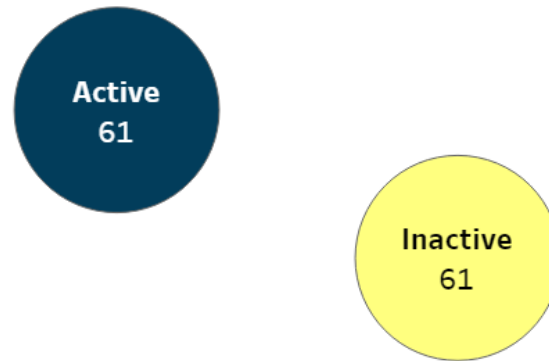
-> 20-21 cohort: 3 (~38%)

Cohort Year	Original Cohort Count	Percent Enrolled at First Spring Term	Percent Enrolled at Second Spring Term
19-20	122	80%	58%
20-21	91	90%	

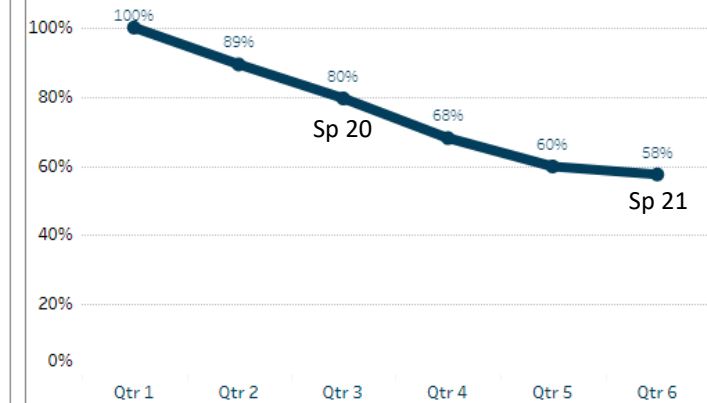
Due to some revisions to the program requirements, students in the original 2018-19 cohort had the option to move into the 2019-20 cohort. 11 students elected to remain: 3 graduated, 7 remain in the program, and 1 is no longer active due to a COVID-19 related reason.

Lake Tahoe College Promise (Fall 2019 & Winter 2020)

Number of Students by Status

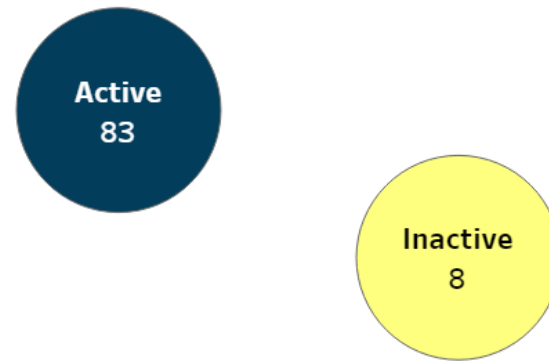


% Enrolled at LTCC by Primary Quarter

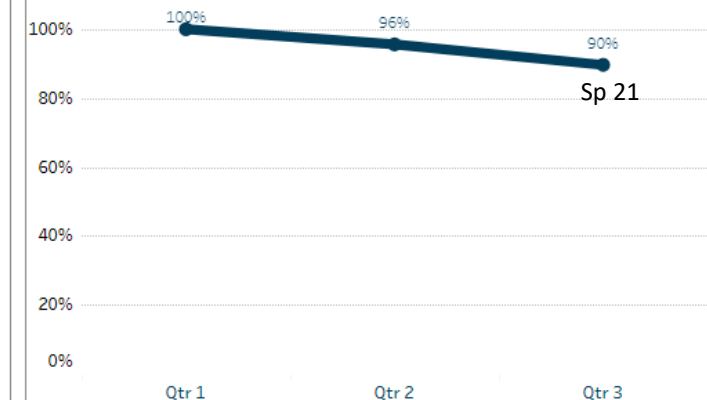


Lake Tahoe College Promise (Fall 2020 & Winter 2021)

Number of Students by Status

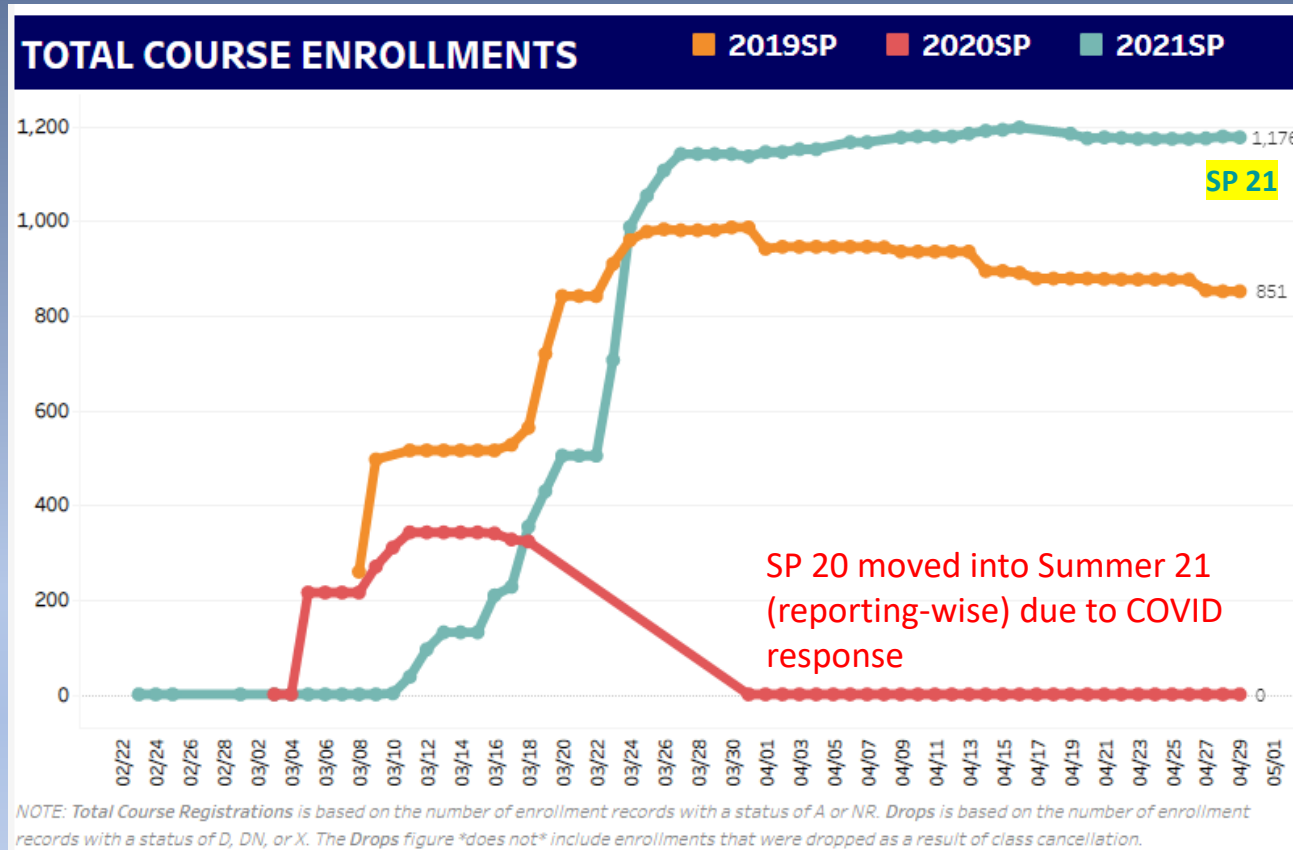


% Enrolled at LTCC by Primary Quarter



Incarcerated Student Program Course Enrollment Trend

Spring Course Enrollment Trends



Due to COVID-19 related safety concerns, ISP Spring 2020 courses started later than planned in the term which resulted in the end date being in the Summer term.

In the College's Colleague data system, term of courses are identified by end date. Therefore, 'Spring 2020' courses are recognized as 'Summer 2020'.

ISP FTES			
Term	2018-19	2019-20	2020-21
Summer	36	39	82
Fall	59	73	80
Winter	64	70	72
Spring	71	2	105
Total	230	184	338

2020-21 FTES Projection:

Total FTE: 1,771

↓ ~1% than 19-20

↓ ~4% than 18-19

-> Funding is based on 1,943

Source	FY18-19 Actual	FY19-20 Actuals	FY20-21 P2 (April 7th)	FY20-21 (May 5th)
Campus Generated Total	1,240	1,244	1,081	1,049
<i>Face to Face</i>	587	535	383	380
<i>Distance Ed</i>	517	574	616	598
<i>ISSI</i>	38	41	16	16
<i>Work Experience/Internship</i>	17	10	6	5
<i>Noncredit CDCP (ESL)</i>	17	13	7	9
<i>Noncredit (EDU 500, GED Prep, Adult Wellness, & other)</i>	64	71	53	40
Incarcerated Students Program	217	184	325	338
<i>ISP General</i>		174	325	328
<i>ISP Work Experience/Internship</i>		10	-	11
ISA's Total	52	55	68	68
<i>Municipal Fire</i>	34	31	49	49
<i>Culinary Jail</i>	2	4	3	3
<i>Cal Fire</i>	16	15	14	14
<i>Industrial Emergency Council</i>	-	5	2	2
SBRPSTC JPA	274	241	275	280
Dual Enrollment	63	66	35	35
Total FTES	1,846	1,790	1,784	1,771
Summer Swing	41	-		
Emergency Conditions Allowance	-	136	143	156
Factored FTES	20	17	16	16
Final FTES	1,907	1,943	1,943	1,943



COVID-19

Stay Informed with the Latest Enrollment
Information

National Student Clearinghouse Research Center's Regular Updates on Higher Education Enrollment

April 29, 2021

“Three months into the spring semester, undergraduate enrollment is in its steepest decline so far since the pandemic began (-5.9%). Community college enrollment fell by double digits (-11.3%) for the first time in this pandemic.”

Community colleges continue to be the higher education sector taking the hardest enrollment hit, attributed mostly to the disparate impact of the COVID-19 pandemic on lower income and underrepresented minority students.

Comments? Questions?

Thank you.

Data Sources: Daily Point-In-Time Trends and Guided Pathways/Student Support Services (LTCC Tableau Dashboards) and Enrollment Trends (LTCC Tableau Public Dashboard)