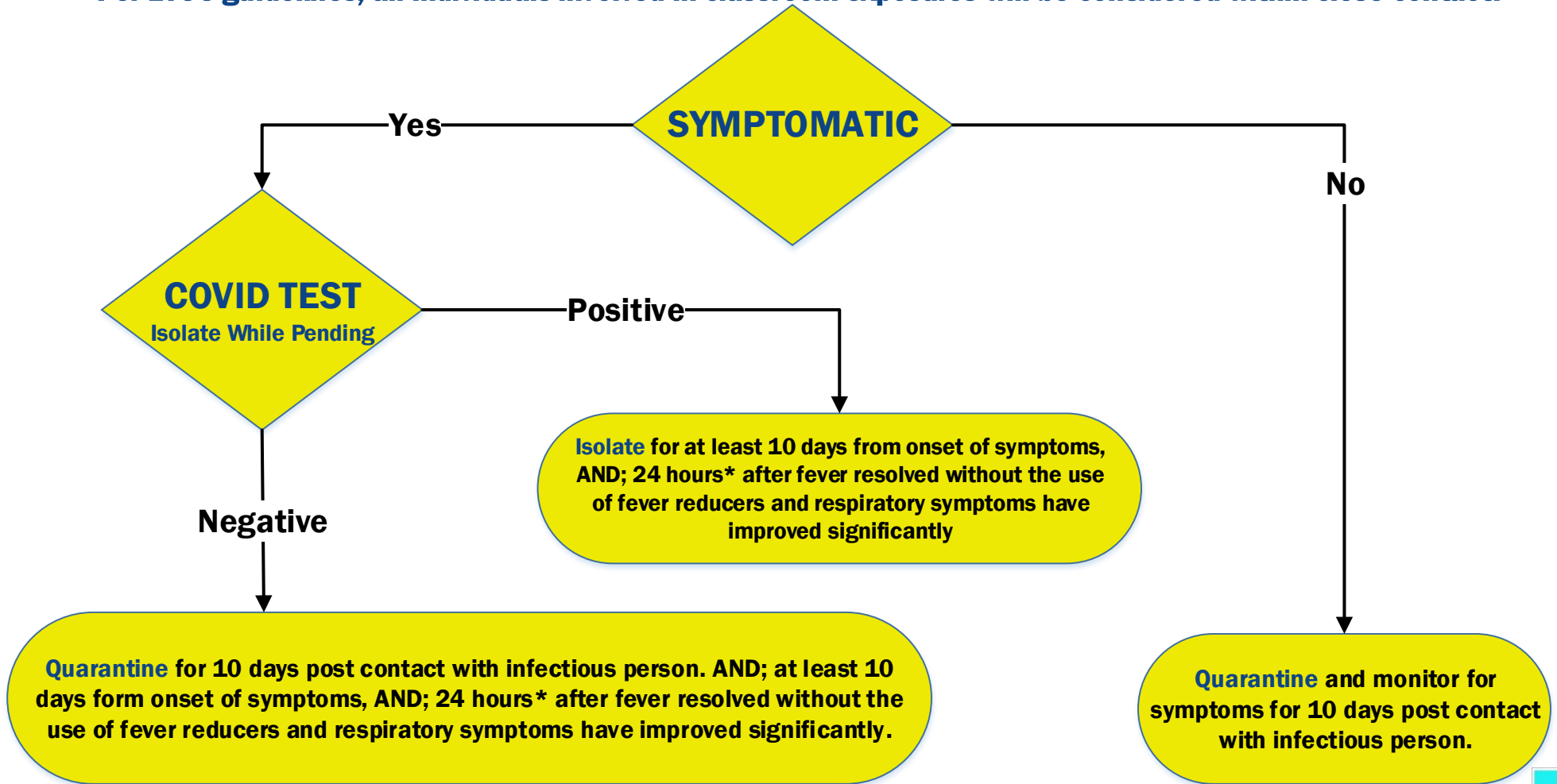


UNVACCINATED PERSON EXPOSED:

CONFIRMED COVID CASE OR A SYMPTOMATIC CASE IN HOUSEHOLD, INTIMATE PARTNER, PROVIDING CARE IN HOUSEHOLD, WORKPLACE, OR OTHER SETTING WITH CLOSE CONTACT.

Close contact is defined as 6 feet or less for 15 minutes or more.

Per LTCC guidelines, all individuals involved in classroom exposures will be considered within close contact.



*CDC Guidelines