

MAY 21, 2020

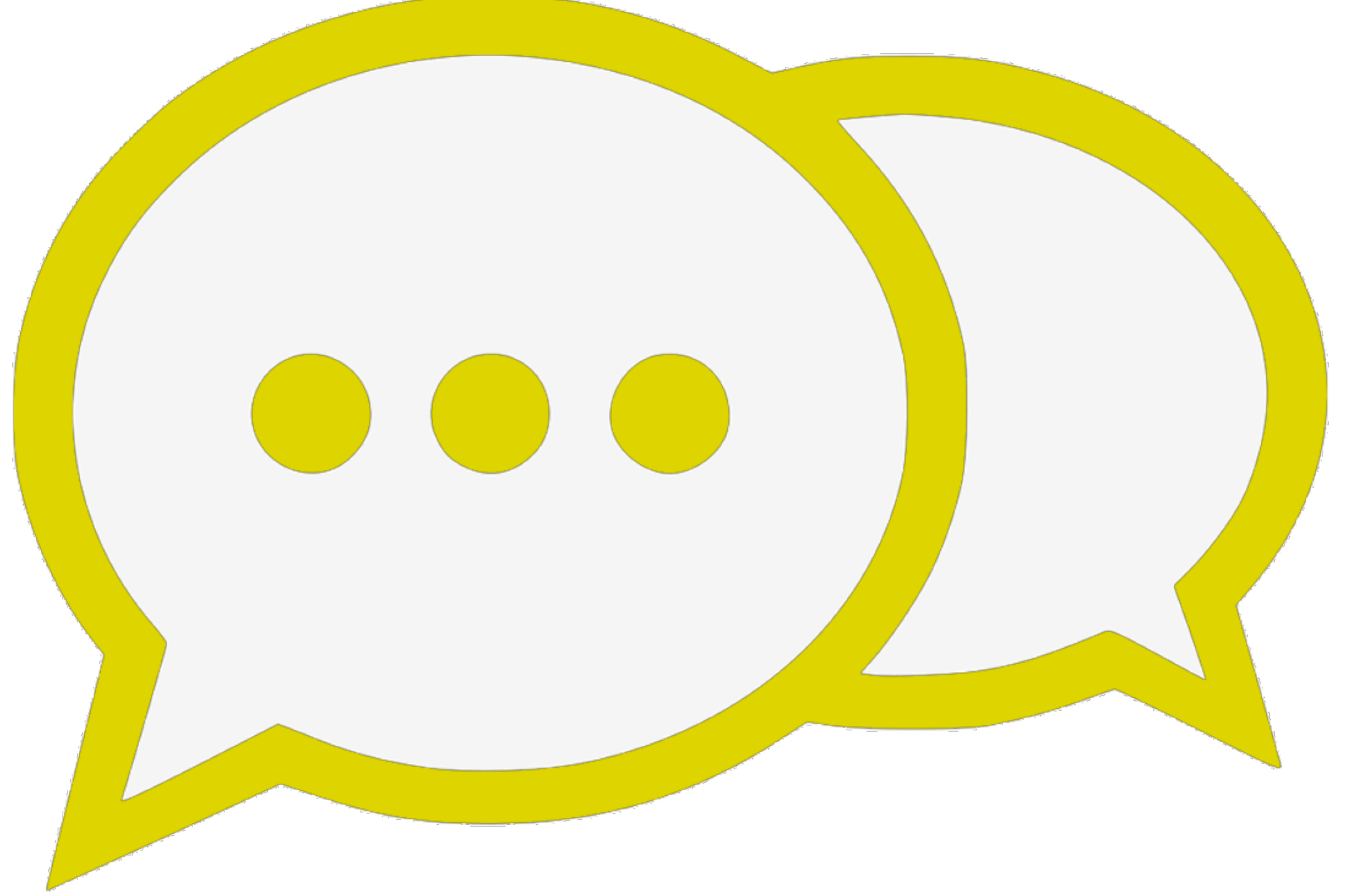
STUDENT FORUM

TOPICS

- Resources and grants to help you succeed
- Summer and Fall registration
- What to expect on campus
- Graduation expectations - [#LTCCGRAD](#)
- Q&A: we want to hear from you!

STUDENT VOICE

- This Student Forum is designed to address LTCC students and provide them with up-to-date information
- Members of the community and faculty/staff are welcome to watch the Student Forum
- Polls are for **STUDENTS** only
- Staff and faculty are asked to hold their questions and leave Q&A time for students



STUDENT FORUM PANELISTS



Jeff DeFranco



Katie Bailey



LTCC Presentations



Sarah Marquez



Shauna Brunea



Ali Bissonnette



Michelle Risdon



Tim Acosta



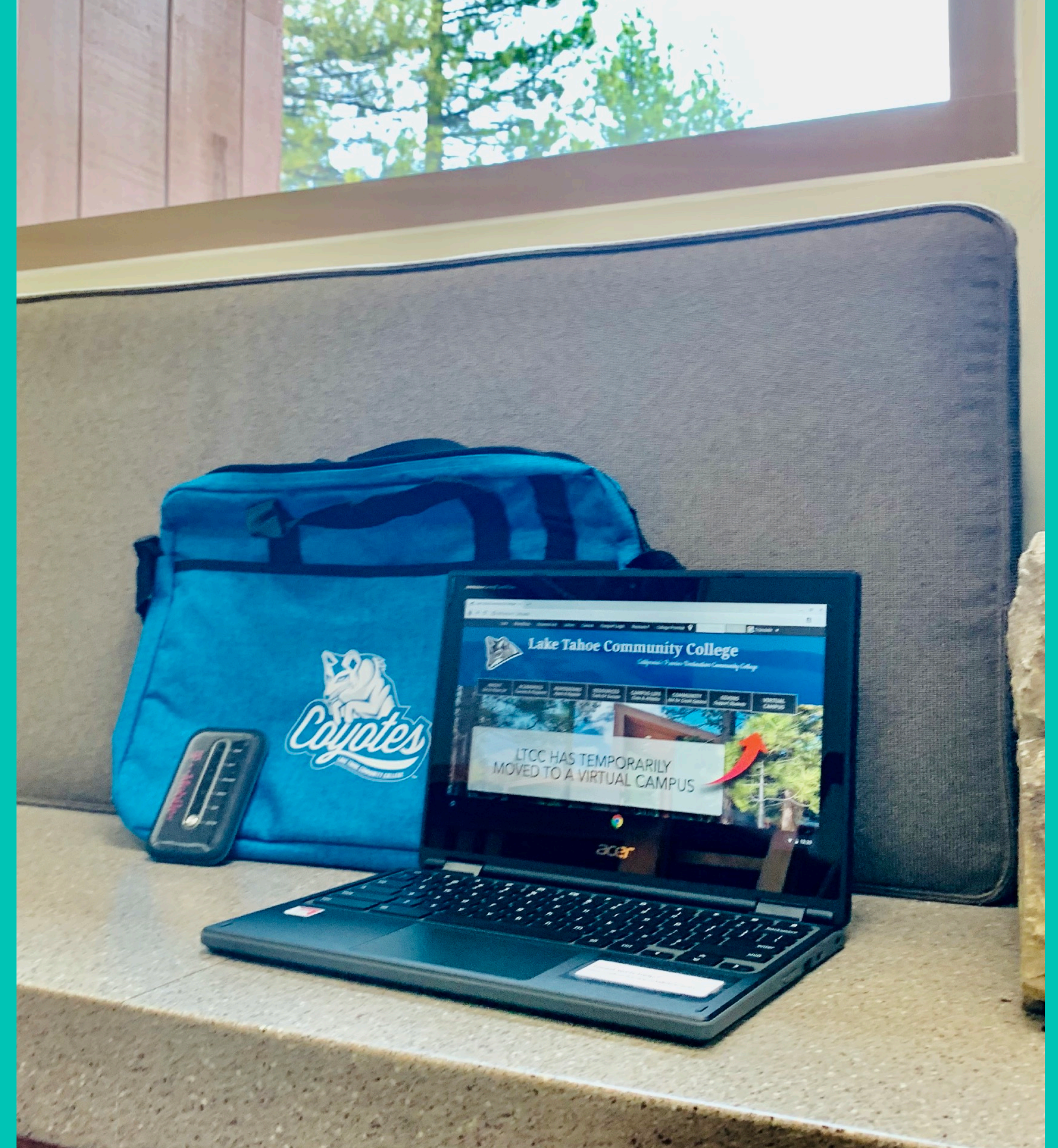
Joanthan King

GOOGLE CHROMEBOOKS

- Check out for **FREE!**
- Available for check out for Summer and fall terms too.
- Check out one term at a time with the Student Technology Use form

Get a referral on Cranium Cafe

ltcc.craniumcafe.com



HOTSPOTS

- FREE to check out
- Unlimited service
- Get a referral from a counselor, faculty member, or student support staff member

ltcc.craniumcafe.com

**AVAILABLE
NOW!**



COMING JUNE 1!

DRIVE-UP WIFI

- First Row of Main Parking Lot
- Monday-Friday 9:00am-4:00pm
- Must remain in your vehicle
- Keep one spot distance between cars
- No access to campus facilities or restrooms
- Have your student ID or a print out of your current schedule to gain access



INCREASE LIFETIME EARNINGS

**DON'T PUT YOUR FUTURE ON
HOLD! A DEGREE IS MORE
VALUABLE THAN EVER!**

IS COLLEGE WORTH IT?

“MAYBE I’LL TAKE A GAP YEAR UNTIL THINGS ARE NORMAL...”

- The average college grad with a bachelor's degree earns **\$78K** vs **\$45K** for those with a high school diploma
- If you complete an Associate’s degree, you stand to make nearly **1/3 more** than a worker with only a high school diploma.
- An Associate’s degree will cause your lifetime earnings to swell by **\$450K** over someone who does not have a post-secondary education.
- The return on on your college investment is estimated to be about **14%** over your life time. That number is even greater when you access resources like **free tuition, scholarships** and **grants** to pay for your educational expenses (vs taking out loans)
- Adding to the necessity of a college degree, in 2020, an estimated **2/3** of job openings will **require post-secondary education** or training. This means your high school education may not cut it anymore while a college education may become the best chance in earning a job.

POLL:
**WHAT ARE YOUR
GREATEST
FINANCIAL
CONCERNS
ABOUT
CONTINUING
YOUR
EDUCATION?**



\$500 MAX LTCC CARES GRANT

Priority given to applications received by **JUNE 1**
APPLY NOW: ltcc.edu/caresgrant

LTCC CARES GRANT

The exclusive purpose of these emergency financial aid grants is to assist students in their degree/certificate completion for their expenses directly related to the disruption of campus operations due to coronavirus, such as:

FOOD

HOUSING

**COURSE
MATERIALS**

HEALTH CARE

TECHNOLOGY

**CHILD CARE
EXPENSES**

LTCC CARES GRANT

Priority given to
applications received by
June 1

- Available to Eligible Students for specific expenses that are a Direct result of disruption caused by COVID-19
- You do not have to repay these funds
- Round 1 in Spring - Round 2 in Fall 2020!

APPLY NOW: ltcc.edu/caresgrant

**PRIORITY WILL BE GIVEN TO
APPLICATIONS SUBMITTED BY
JUNE 1, 2020**

LTCC CARES

To be considered for an emergency grant of up to \$500, please complete the application below. We are requesting this information in order to determine eligibility and to better understand the needs of our students. Your information will remain confidential. Please submit questions to president@ltcc.edu.

Questions marked with an asterisk (*) require an answer.

LTCC CARES provides Emergency Grants of up to \$500 for students enrolled at Lake Tahoe Community College through the Coronavirus Aid, Relief, and Economic Security (CARES) Act. The exclusive purpose of these emergency financial aid grants is to assist students in their degree/certificate completion for their expenses directly related to the disruption of campus operations due to coronavirus, such as food, housing, course materials, technology, health care, and child-care expenses.



LTCC CARES

* Required

Personal Information

Let us know who you are and your preferred contact information.

First Name *

Your answer

Last Name *

Your answer

LTCC Student ID Number *

Your answer

Email *

Your answer

Phone Number *

LTCC CARES

* Required

Student Status

Tell us more about your goals, status, and class time as a student at LTCC.

Have you filed for financial aid (FAFSA - Free Application for Federal Student Aid) for 2019-2020? *

In order to be considered for the LTCC CARES Emergency Grants, you MUST submit a FAFSA application (exceptions may apply). If you need assistance with financial aid, help is available. Please contact the Financial Aid Department Mon. - Fri. from 8:00 - 4:00 at (530) 830-0081 or email financialaid@ltcc.edu.

What is your current program of study? *

Are you seeking a degree, certificate, enhancing your skills, or taking classes for personal development? *

APPLY NOW: ltcc.edu/caresgrant

**POLL:
WHAT DO
YOU MISS
MOST ABOUT
CAMPUS?**



WHAT TO EXPECT IN JUNE



Child Development Center Planned Reopening June 1



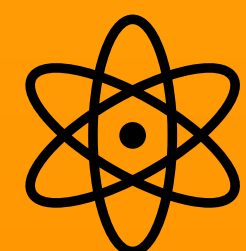
Campus buildings will not open up for student access for the remainder of Spring term



Limited required Fire Science and EMT labs will be taking place off Campus



Campus parking lot WiFi will be made available to students



COVID-19 testing site continues operations in LTCC PE facility

LTCC IS A COVID-19 TESTING SITE

LTCC is one of two COVID-19 testing sites in El Dorado County

MUST MAKE AN APPOINTMENT

Call: (888) 634-1123 or

Online at <https://lhi.care/covidtesting>

CA AND NV RESIDENTS

- No residency requirements or citizenship status questions asked
- **FREE TEST** - cost is covered by insurance or the state of California for those without health insurance



WHAT TO EXPECT FOR SUMMER & FALL COURSES

SUMMER

- Enhanced Virtual Education
- Primarily online courses
- ISSI virtual
- Hybrid options for limited classes in public safety (Fire/EMT) & wilderness education.



FALL

- Enhanced Virtual Education
- Primarily online
- Hybrid options for limited classes in public safety (Fire/EMT), sciences, 3D arts, culinary, & wilderness education.

CLASS FORMATS

Tutoring, counseling, and other support services available virtually for all class formats!



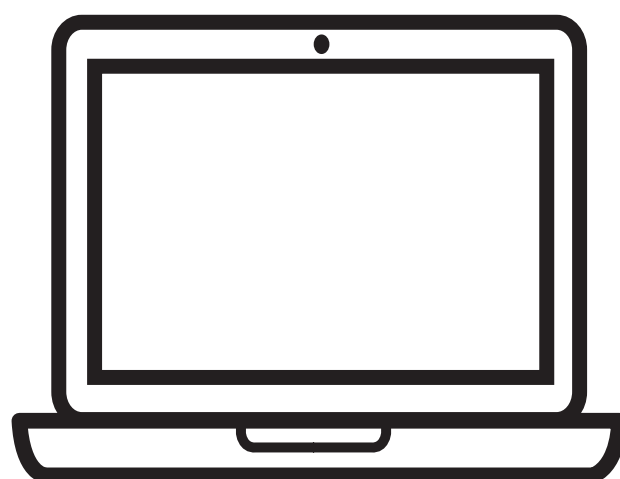
EVE

- High-touch environment with extra support
- Lots of discussion & interaction
- Use of video for visual learning
- Set class hours on consistent days/times



HYBRID

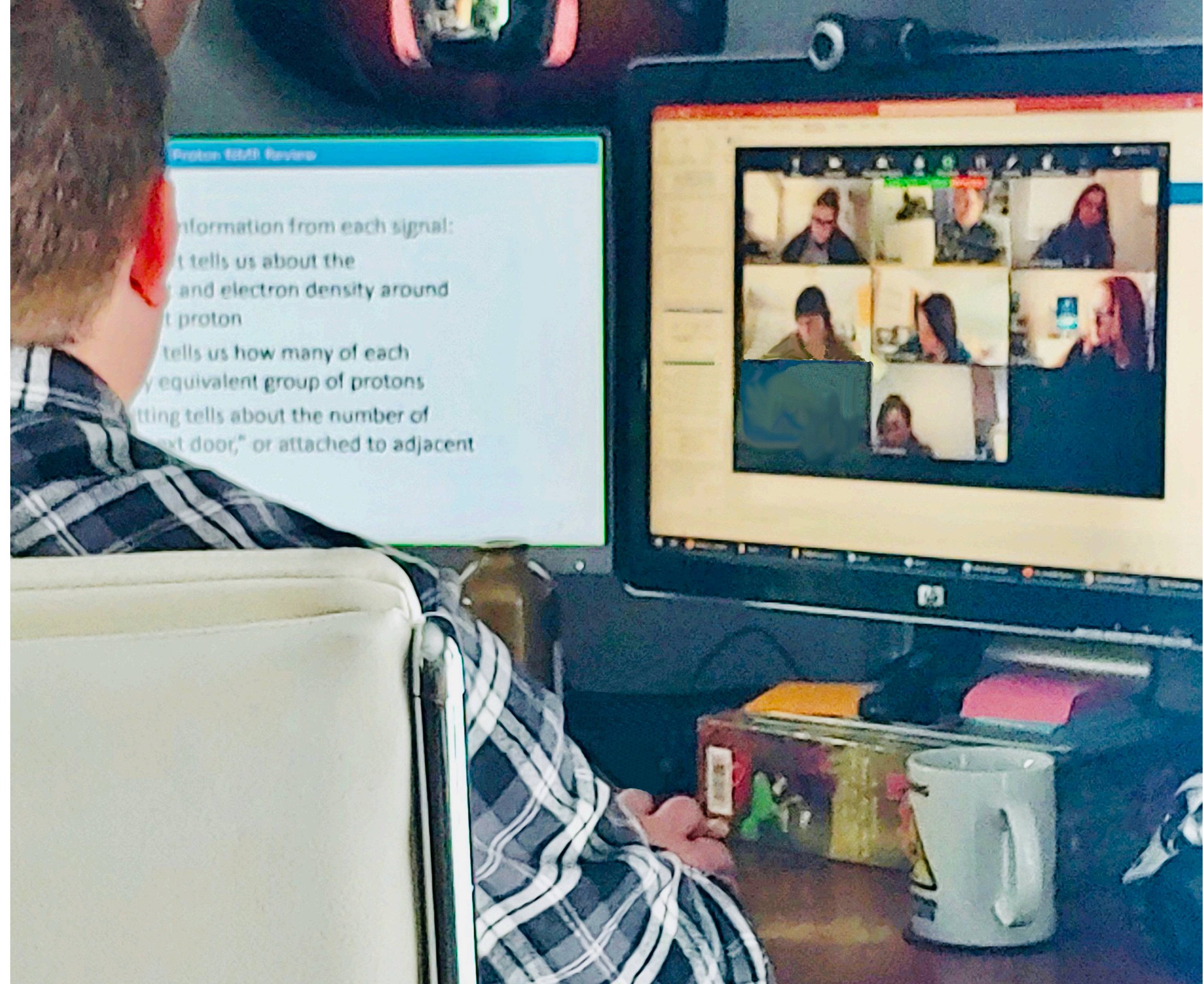
- Combining online learning and lectures with small-group, physically distanced, in-person training
- Example: Fire, EMT, 3D Arts, Culinary, Sciences, Wilderness Education



ONLINE

- Traditional online learning format
- More on your own schedule
- No need to virtually “attend class” at a specific time

POLL:
WHAT DO YOU
THINK ABOUT
ENHANCED
VIRTUAL
EDUCATION?





What are recommendations for adjusting to an online platform?

CLASS FORMATS

Tutoring, counseling, and other support services available virtually for all class formats!



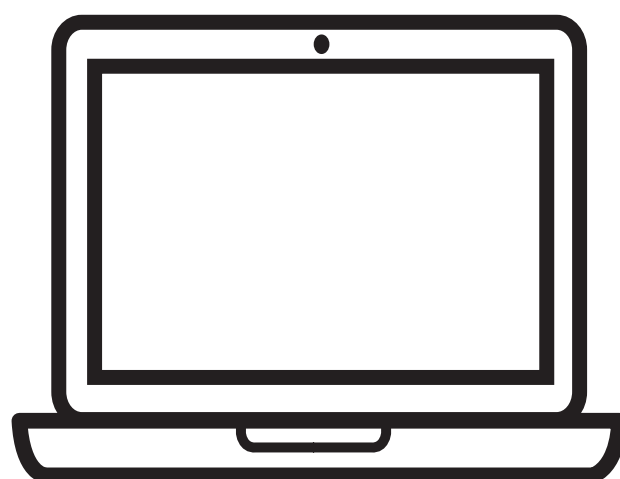
EVE

- High-touch environment with extra support
- Lots of discussion & interaction
- Use of video for visual learning
- Set class hours on consistent days/times



HYBRID

- Combining online learning and lectures with small-group, physically distanced, in-person training
- Example: Fire, EMT, 3D Arts, Culinary, Sciences, Wilderness Education



ONLINE

- Traditional online learning format
- More on your own schedule
- No need to virtually “attend class” at a specific time

WHAT COMING TO CAMPUS LOOKS LIKE:





**MASKS ARE
REQUIRED ON CAMPUS**

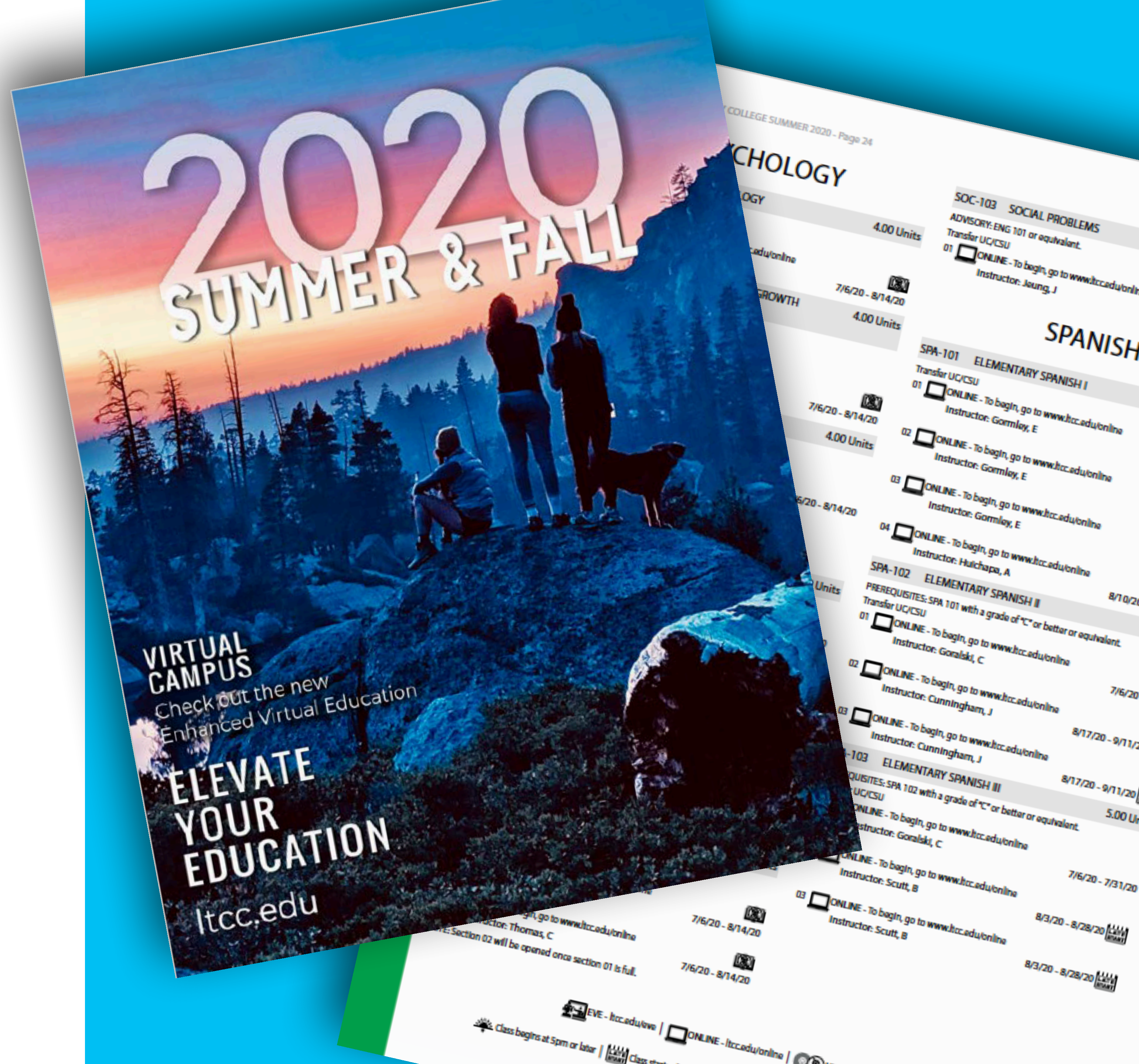
POLL:
WHAT
SERVICES DO
YOU HOPE
WILL BE
AVAILABLE
FACE-TO-FACE
THIS FALL?



SCHEDULE

SUMMER & FALL 2020

- Schedule is now posted online:
ltcc.edu/schedule
- Registration begins **May 26**,
check WebAdvisor for your
date and time
- Payment Plans are available



CHECK YOUR REGISTRATION DATE ON PASSPORT

REGISTRATION DATES

You may register during or after your registration date for both

Summer & Fall

	If you are a/an:	Registration Date	Only if:
Guided Path for Success (GPS) Completed ✓ Orientation ✓ Meet with a Counselor for an Education Plan <i>*If you feel you should be excused from GPS requirements or have questions about your status, please contact the Counseling Office at x211 or counselor@ltcc.edu</i>	Foster Youth, Former Foster Youth, Eligible Military, Veteran, DSPS, EOPS, or CalWORKs	Tuesday, May 26 (opens at 7am)	GPS is complete AND:
	Lake Tahoe College Promise, Equity, Student Senate	Tuesday, May 26 (opens at noon)	You are not on academic probation
	Continuing Students (attended the previous quarter)	Wednesday, May 27 (opens at 7am)	You have fewer than 150 units
	New Students Returning students (former students who have not attended LTCC for 3 consecutive major quarters)	Thursday, May 28 (opens at 7am)	You are not a K-12 student High school seniors can register during this time
	Continuing Exempt Students: New, continuing or returning students who have a college degree or have completed GPS at another college or who are taking classes only for personal enrichment	Friday, May 29 (opens at 7am)	You are not on academic probation, you have fewer than 150 units, you are not a K-12 student
	Student on academic probation or who has exceeded 150 units	Tuesday, June 2 (opens at noon)	You are not a K-12 student
	Non-credit registration	Wednesday, June 3 (opens at 8am)	
OPEN REGISTRATION		Thursday, June 4	K-12 & all other students

CHECK OUT CRANIUM CAFE

- Live assistance from a number of campus departments
- One-on-one opportunities to discuss your unique situation
- Counselors, library staff, DRC staff, tutors, Equity Mentors, Promise Navigators, and even President Jeff DeFranco have office hours in Cranium Cafe



Online

HELLO/HOLA

Ramirez, America - Financial Aid
EOP&S/CARE/Cal WORKs
OFFICE HOURS: MONDAY-FRIDAY: 7:30 a.m. - 4:00 p.m.
+15308300081
Ramirez@ltcc.edu

SEND OFFLINE MESSAGE

SCHEDULE MEETING


Online

Knock on Door

Murphy, Sean
Student Services, Office Clerk I
Hrs: MWF 1 pm -5 pm, TH 12 pm -5 pm
+15202767149
ssasst1@mail.ltcc.edu

SEND OFFLINE MESSAGE

SCHEDULE MEETING


Online

Knock on Door

Lopez, Jocelyn
Coyote Hotline
Office Hours: Mon-Fri 9:00am - 3:00pm

SEND OFFLINE MESSAGE

SCHEDULE MEETING


Offline

Masellones, Daniel - Student Services
Enrollment & Student Support Tech
masellones@ltcc.edu
Office: Enrollment Services

SEND OFFLINE MESSAGE

SCHEDULE MEETING


Online

Live Chat

Braun, Reggie J
Counselor
braun@ltcc.edu
Office: Virtual Appointments Available

SEND OFFLINE MESSAGE

SCHEDULE MEETING

COYOTE HOTLINE

(530) 542-8812

Monday - Friday 9am-4pm

Program-specific questions?
Call their direct line, email, or Cranium Cafe

Anything else – call the Coyote Hotline!



GRADUATION 2020 PLANNING

**ALL GRADUATES
ARE INVITED
TO JOIN US IN
JUNE 2021
FOR A SUPER
CELEBRATION
GRADUATION**



COYOTE CARAVAN GRADUATION



GRAD-PACK PICK UP

- Pick up your cap and gown (it's FREE)
- Record a "15 seconds of gratitude" video to share as part of the celebration
- Grad-Pack pick up dates will be announced on the Coyote Corner, your favorite LTCC social media, and the LTCC website
- Use **#LTCCGRAD** with your social media posts and SHARE!

CONTACT SHAUNA BRUNEA | BRUNEA@LTCC.EDU
LTCC.EDU/GRADUATION



GRADUATION LAWN SIGNS

Will be available at the
Grad Pack Pick-Up

**SHOW YOUR
COYOTE PRIDE!**



#LTCCGRAD

POLL: FEEDBACK ON THE GRADUATION PLANNING?



RESOURCES

STUDENT ELECTIONS

- Campaigning window for students
5/11-5/22
- Candidate forum via Zoom
5/19 | Noon-1:00pm
- Election dates for ballot submissions
5/26-5/29
- Winning Candidate Announcement
First week of June



MAY 21 & 22, 2020 | 9 AM-5 PM

TAHOE WORKS

VIRTUAL JOB & RESOURCE FAIR



FREE JOB & RESOURCE FAIR - REGISTER AT TAHOEJOBFAIR.EASYVIRTUALFAIR.COM

SCHOLARSHIPS

DEADLINE TO APPLY: FRIDAY MAY 22

TOMORROW!!!

Q&A