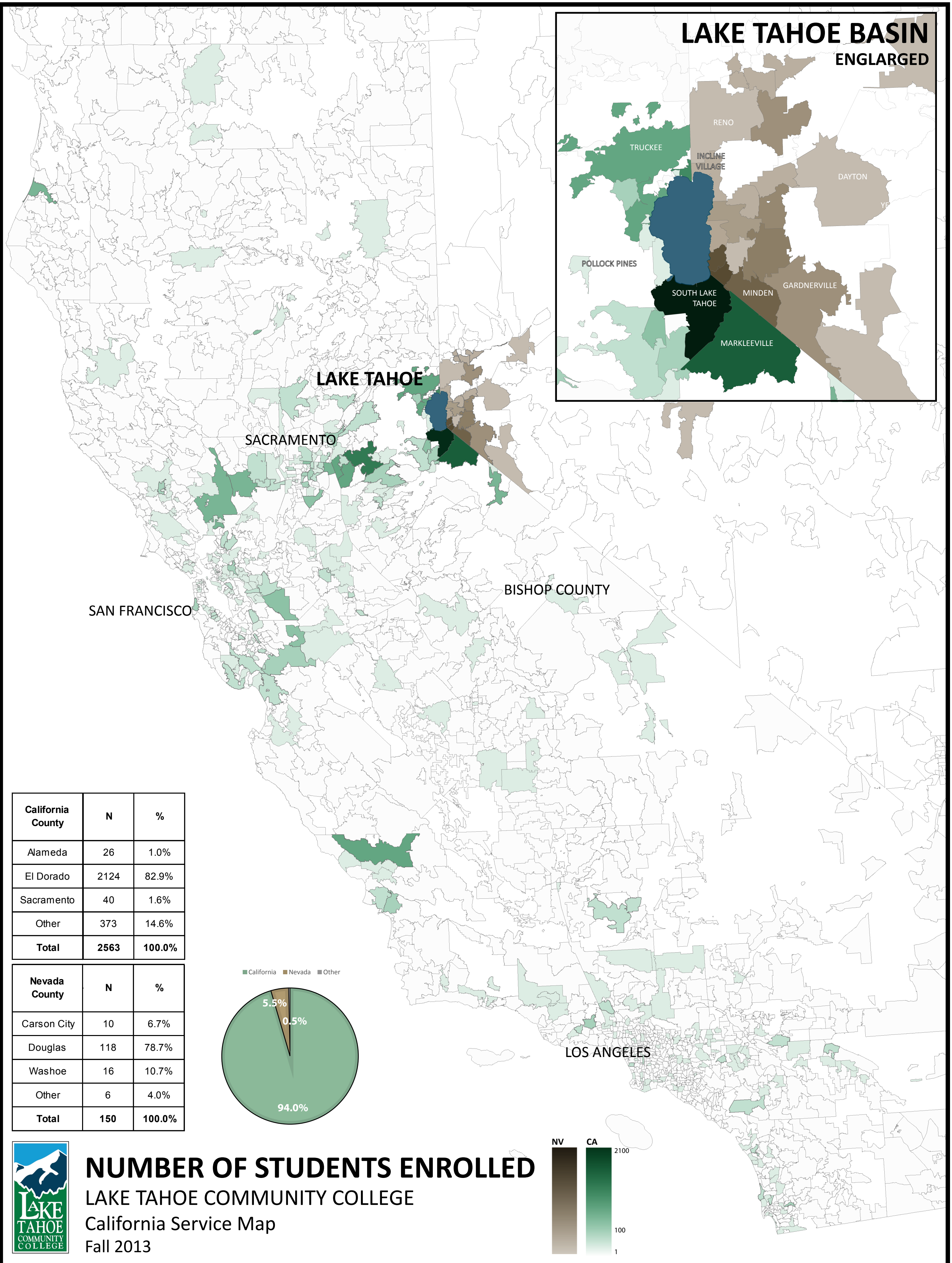
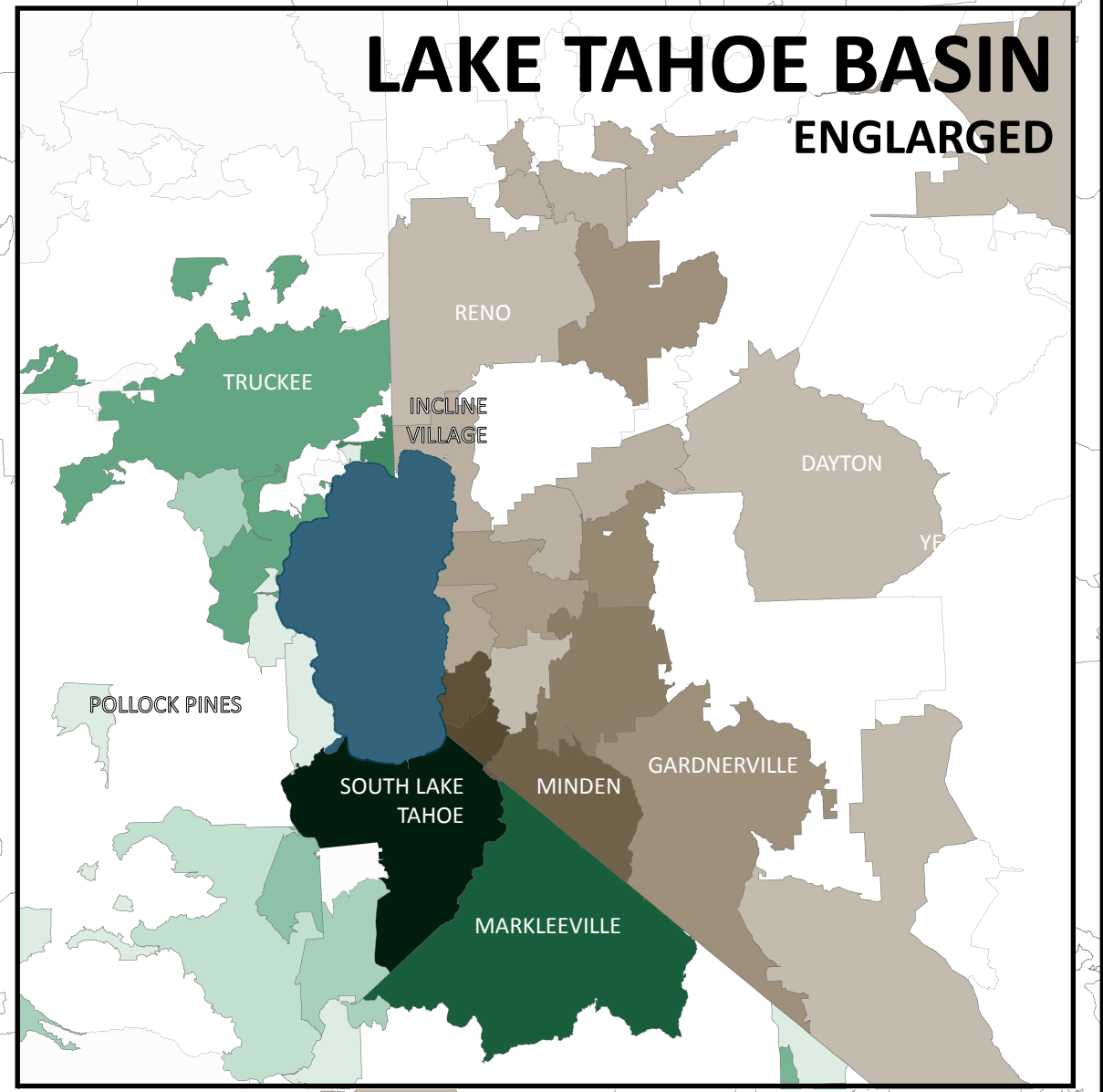
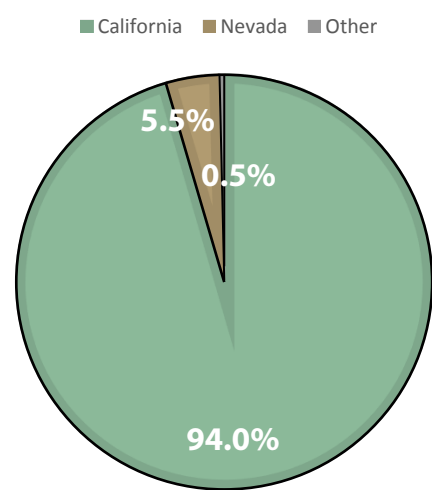


# LAKE TAHOE BASIN ENLARGED



California County	N	%
Alameda	26	1.0%
El Dorado	2124	82.9%
Sacramento	40	1.6%
Other	373	14.6%
<b>Total</b>	<b>2563</b>	<b>100.0%</b>

Nevada County	N	%
Carson City	10	6.7%
Douglas	118	78.7%
Washoe	16	10.7%
Other	6	4.0%
<b>Total</b>	<b>150</b>	<b>100.0%</b>



## NUMBER OF STUDENTS ENROLLED LAKE TAHOE COMMUNITY COLLEGE California Service Map Fall 2013

