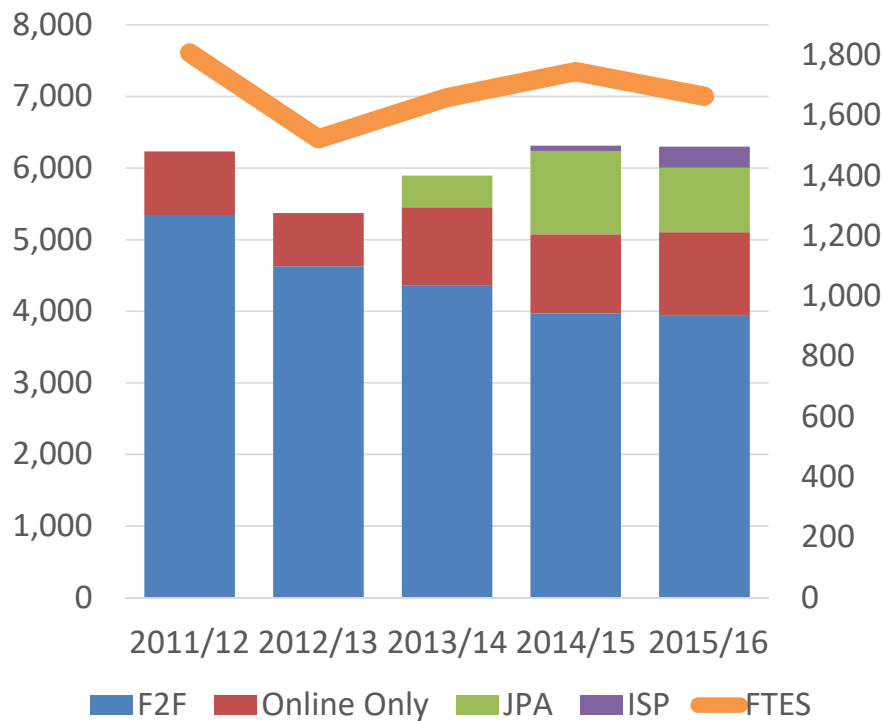


# Enrollment Trends

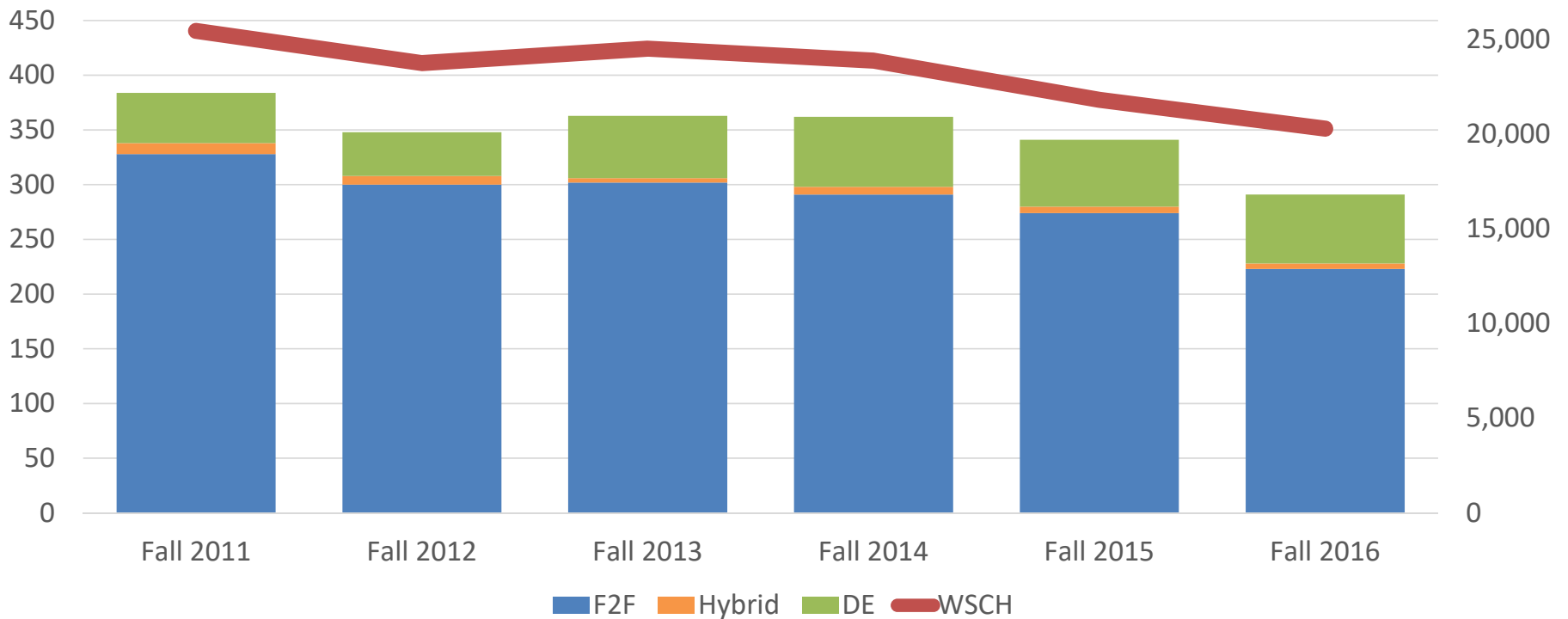
Lake Tahoe community college

# Annual Unduplicated Student Headcount and Unfactored FTES



Year	F2F	Online Only	JPA	ISP	FTES
2011/12	5,332	902			1,807
2012/13	4,627	745			1,522
2013/14	4,365	1,089	442		1,659
2014/15	3,969	1,105	1,166	73	1,745
2015/16	3,947	1,157	900	297	1,663

# Fall Quarter Section Offerings by Modality and Weekly Student Contact Hours



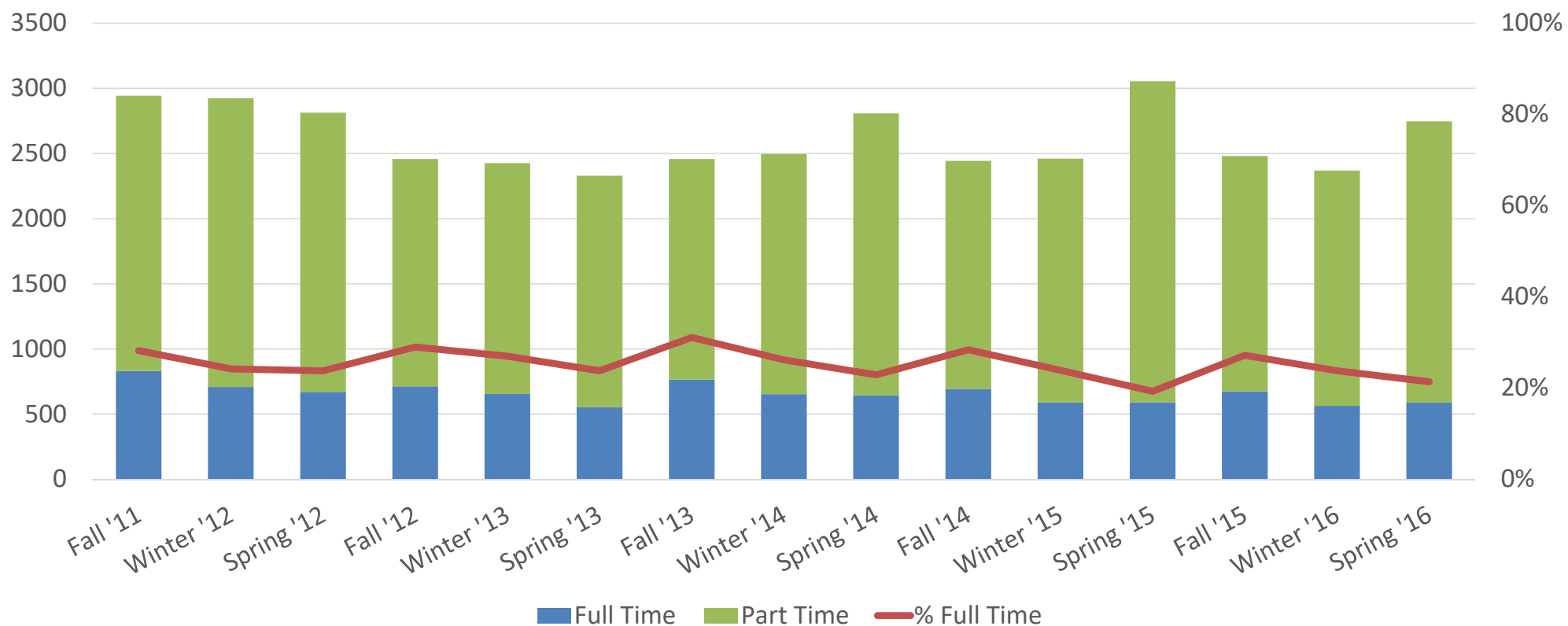
Note: Excludes South Bay Regional Public Safety Consortium and Incarcerated Student Program

# Fall Quarter Section Enrollment Trends

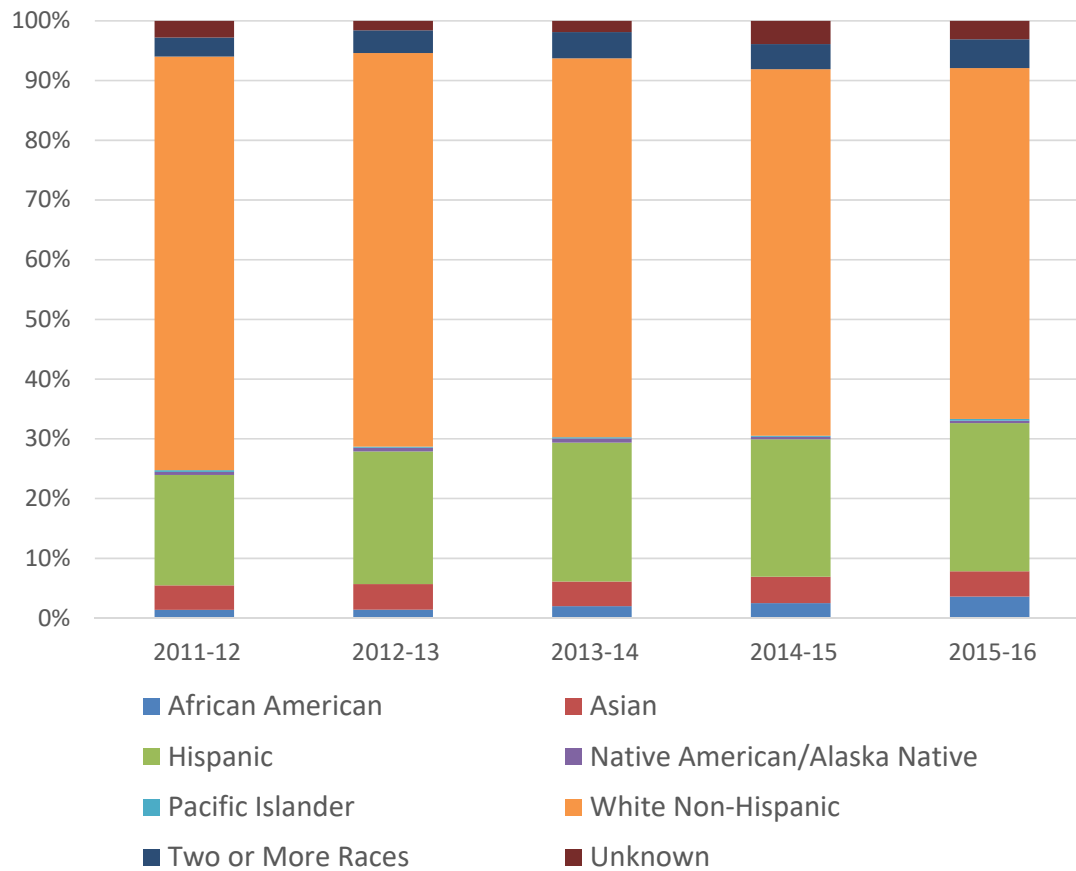
Term	Sections Offered	Sections Cancelled	Cancellation Rate	Enrollment	Average Class Size	WSCH
Fall '11	384	32	8.3%	6,592	18.7	25,453
Fall '12	348	29	8.3%	5,872	18.4	23,753
Fall '13	363	56	15.4%	5,853	19.1	24,515
Fall '14	362	62	17.1%	5,301	17.7	23,887
Fall '15	341	46	13.5%	4,921	16.7	21,815
Fall '16	291	39	13.4%	4,534	18.0	20,289

Note: Excludes South Bay Regional Public Safety Consortium and Incarcerated Student Program

# Primary Term Full Time vs. Part Time Enrollment by Unduplicated Student Headcount

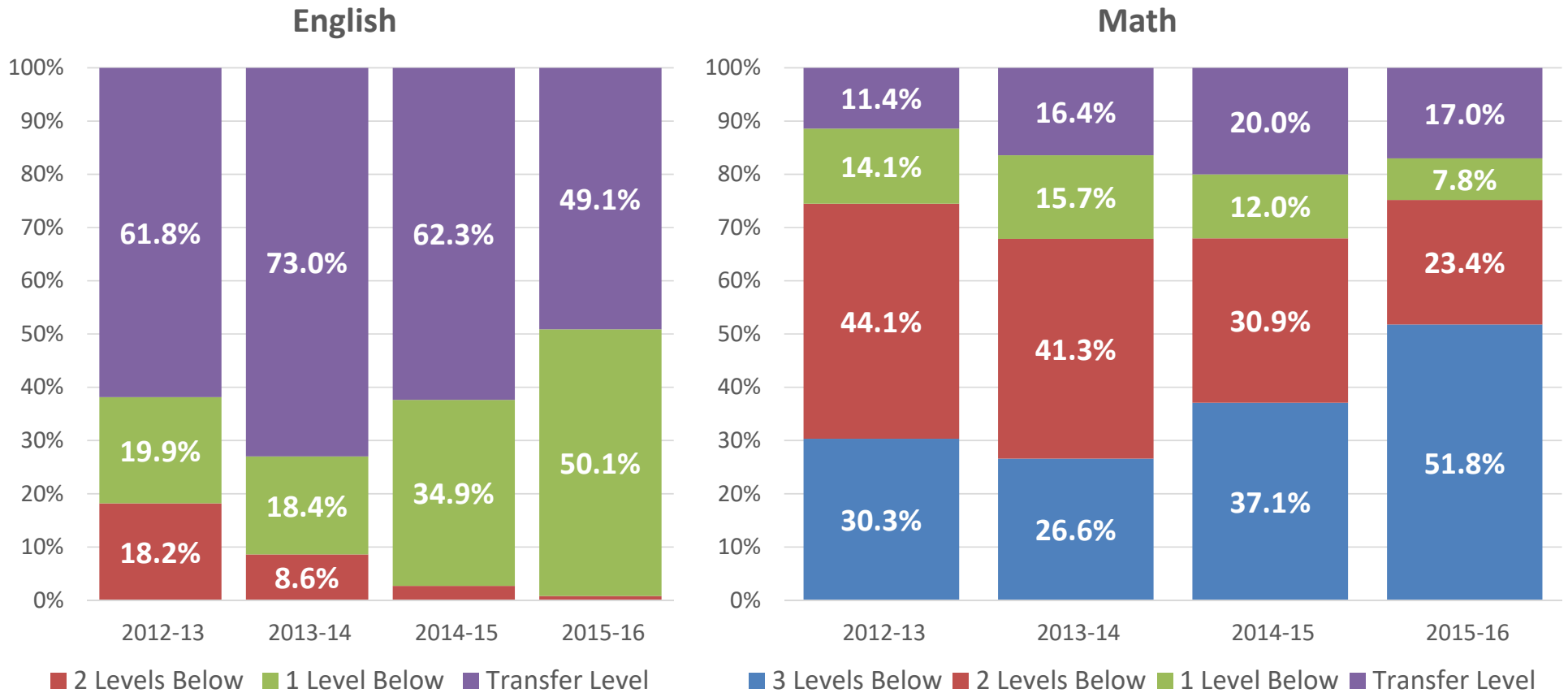


# Student Race/Ethnicity

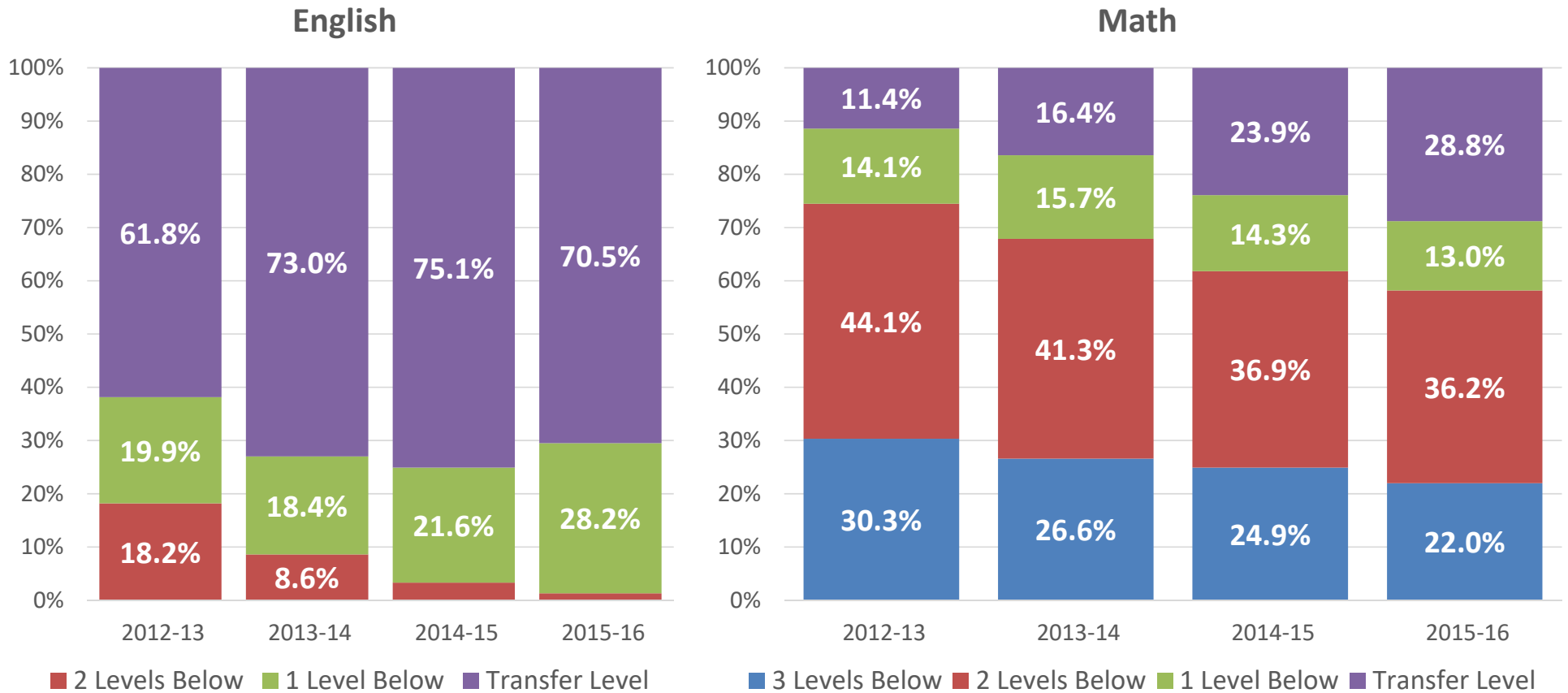


Race/Ethnicity	11/12	12/13	13/14	14/15	15/16
African American	1.4%	1.4%	2.0%	2.5%	3.6%
Asian	4.1%	4.3%	4.1%	4.4%	4.2%
Hispanic	18.5%	22.2%	23.3%	23.0%	24.8%
Native American/Alaska Native	0.5%	0.6%	0.7%	0.4%	0.4%
Pacific Islander	0.3%	0.2%	0.2%	0.2%	0.3%
White Non-Hispanic	69.4%	65.9%	63.5%	61.3%	58.7%
2+ Races	3.2%	3.8%	4.4%	4.2%	4.8%
Unknown	2.8%	1.6%	1.9%	3.9%	3.1%

# Initial English and Math Enrollment Levels with the Incarcerated Student Program

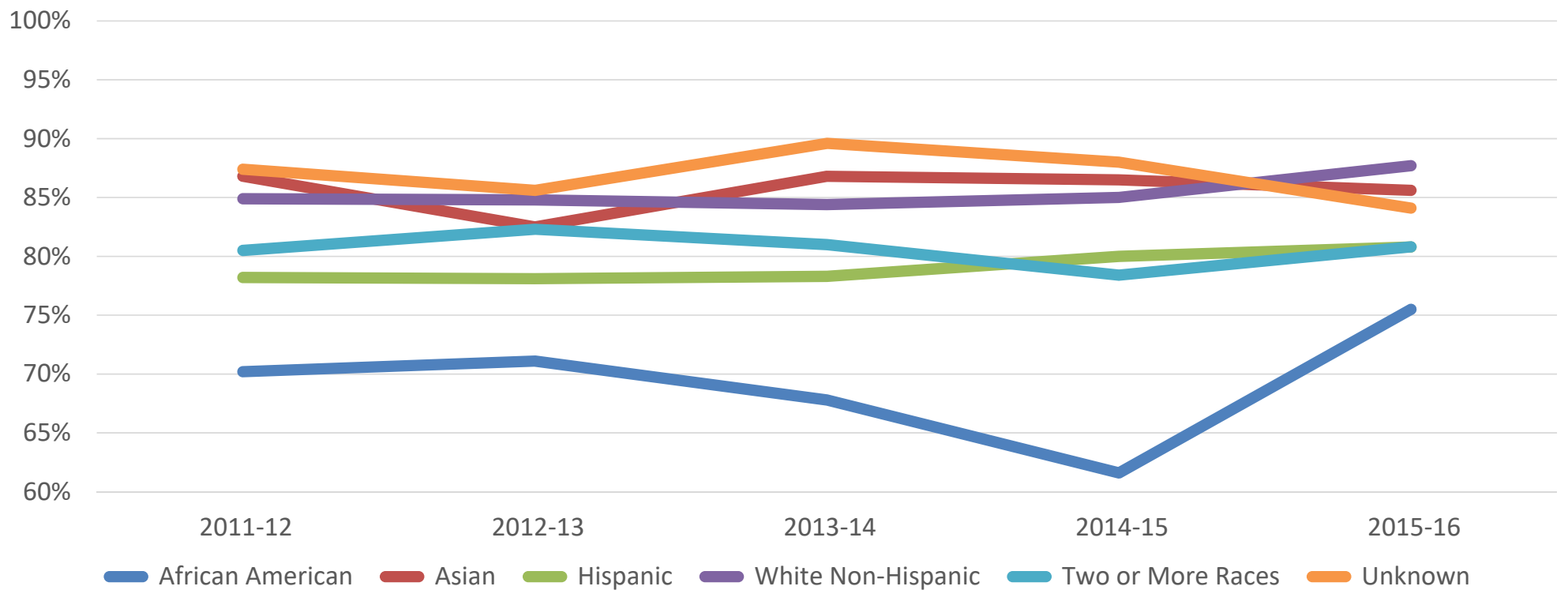


# Initial English and Math Enrollment Levels without the Incarcerated Student Program



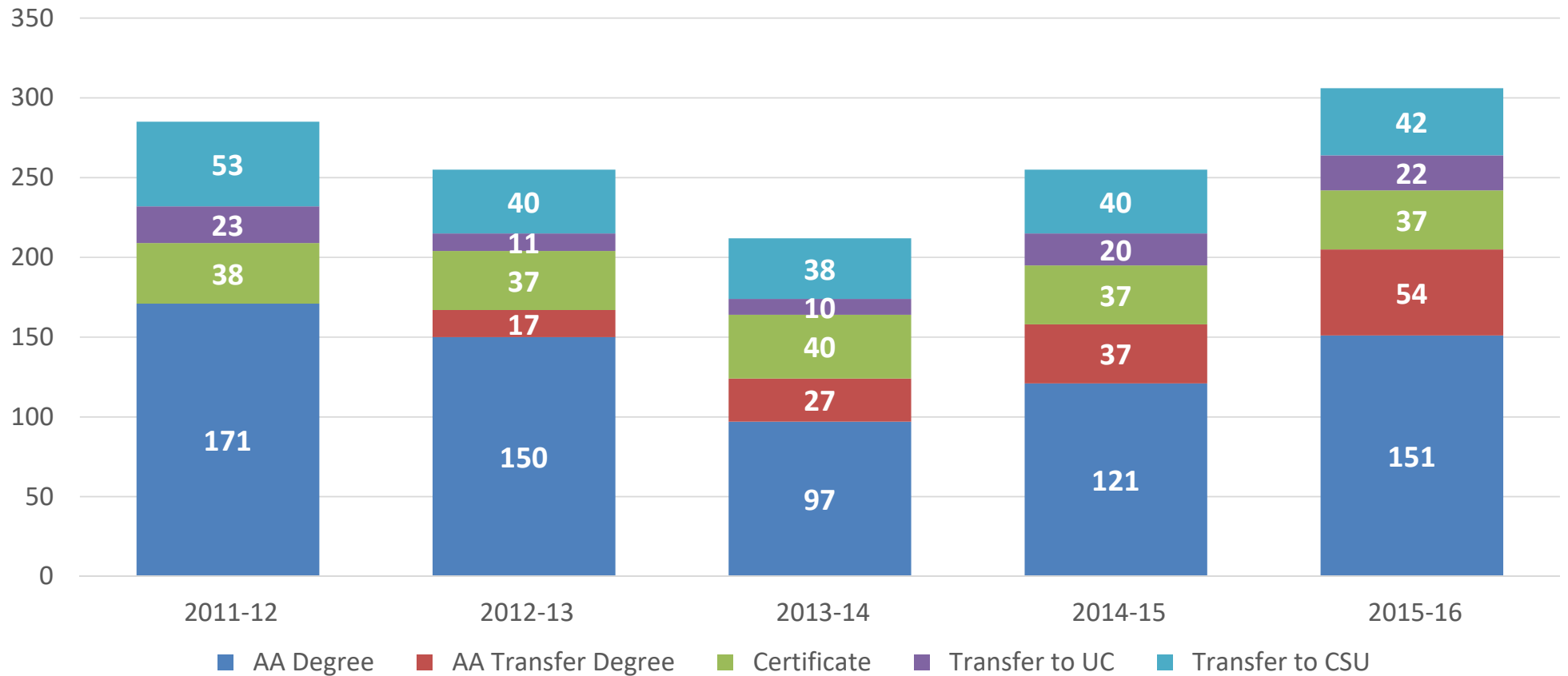


# Annual Course Success Rates by Student Race/Ethnicity

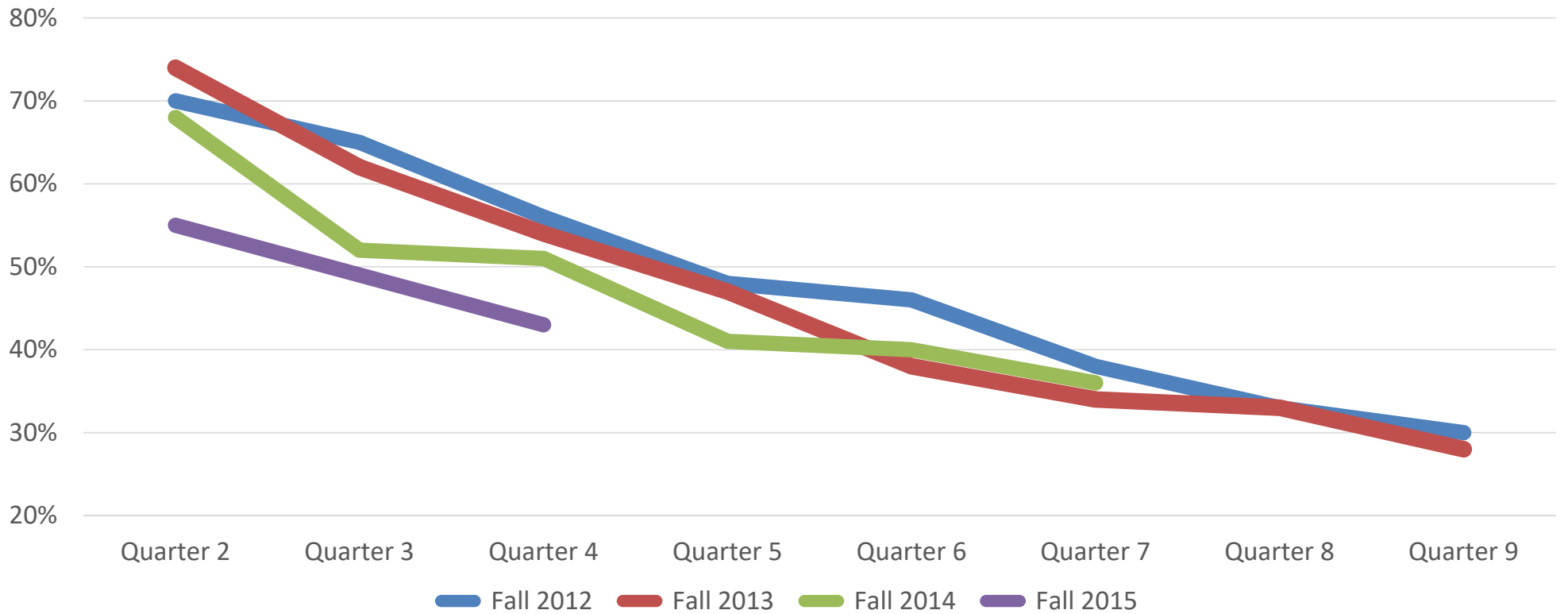


Note: Average annual enrollments for Native American/Alaska Native and Pacific Islander were less than 75 and are not included.

# Annual Student Achievement Rates by Outcome



# First-Time, Degree-Seeking Student Three Year, Primary Term Persistence Rates by Cohort



<b>FTES Projections Fiscal Year 2016/17</b>				
<b>Source</b>	<b>FY15/16 Budgeted</b>	<b>FY15/16 Actual</b>	<b>FY16/17 Adopted</b>	<b>FY16/17 Feb 7</b>
<b>Campus Generated Total</b>	<b>1,333</b>	<b>1,226</b>	<b>1,225</b>	<b>1,153</b>
<i>Face to Face</i>	809	732	675	654
<i>Distance Ed</i>	390	370	385	370
<i>California Nevada Interstate Agreement</i>	-	-	30	-
<i>ISSI</i>	33	33	32	31
<i>Work Experience/Internship</i>	15	35	40	35
<i>Noncredit CDCP (ESL)</i>	29	22	23	23
<i>Noncredit (EDU 500, GED Prep, Adult Wellness, &amp; other)</i>	57	34	40	40
<b>Incarcerated Students Program</b>	<b>175</b>	<b>112</b>	<b>140</b>	<b>130</b>
<b>ISA's Total</b>	<b>50</b>	<b>61</b>	<b>65</b>	<b>57</b>
<i>Municipal Fire</i>	40	39	40	37
<i>Culinary Jail</i>	5	9	9	7
<i>Cal Fire</i>	5	13	16	13
<b>SBRPSTC JPA</b>	<b>250</b>	<b>240</b>	<b>280</b>	<b>280</b>
<b>Dual Enrollment</b>	<b>25</b>	<b>24</b>	<b>35</b>	<b>30</b>
<b>Stabilization</b>	<b>-</b>	<b>82</b>	<b>-</b>	<b>-</b>
<b>Factored FTES</b>	<b>15</b>	<b>16</b>	<b>16</b>	<b>15</b>
<b>TOTAL FTES</b>	<b>1,848</b>	<b>1,761</b>	<b>1,761</b>	<b>1,665</b>