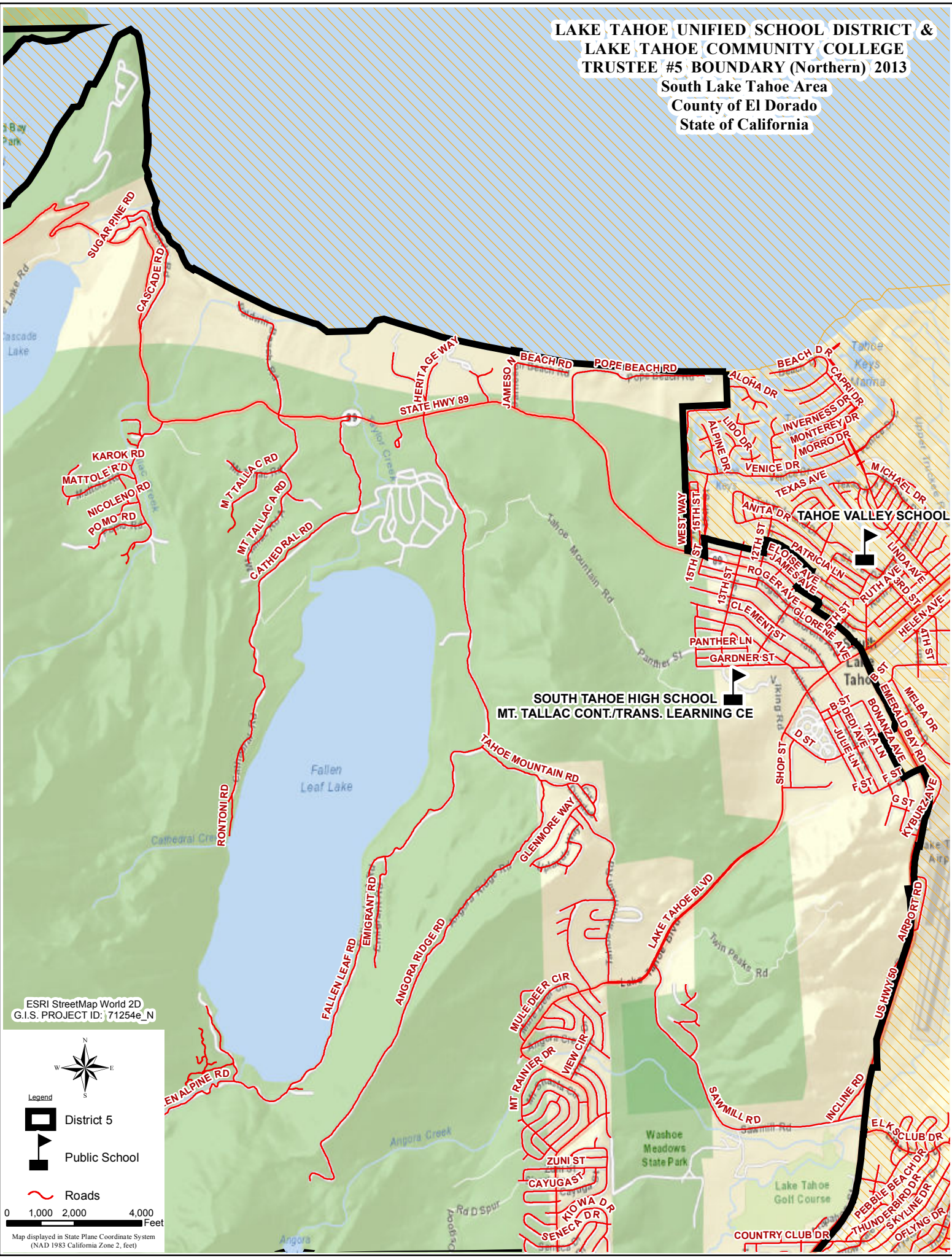
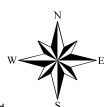





**LAKE TAHOE UNIFIED SCHOOL DISTRICT &
LAKE TAHOE COMMUNITY COLLEGE
TRUSTEE #5 BOUNDARY (Northern) 2013**
South Lake Tahoe Area
County of El Dorado
State of California



ESRI StreetMap World 2D
G.I.S. PROJECT ID: 71254e_N



- Legend**
-  District 5
 -  Public School
 -  Roads

0 1,000 2,000 4,000 Feet

Map displayed in State Plane Coordinate System (NAD 1983 California Zone 2, feet)